



# CONTAINER UPGRADE KIT

Partner with  
Europe's leading  
full-service provider.

# CONTAINER UPGRADE KIT

If you're looking to enhance the functionality, security, and adaptability of your current containers, the Janus container upgrade kit is ideal.



It allows for the seamless installation of the Janus high quality roller doors on any shipping container, offering a cost-effective means of upgrading your containers to meet customers' requirements.

The Janus container upgrade kit comes as a complete kit for easy installation. You have the option to also retrofit the award-winning Nokē™ One digital locks that enable remote site management to further enhance your product range.



# CONTAINER UPGRADE KIT



The Janus container upgrade kit comes as a complete kit for quick installation.

This solution allows for the seamless installation of the Janus roller doors on any shipping container, offering a cost-effective means of upgrading your containers to meet customers' requirements.

## BENEFITS

### FLEXIBLE

Customisable, scalable and relocatable

### SUSTAINABLE

Manufactured according to EN 10169 + A1 and available in GreenCoat® painted steel

### DURABLE

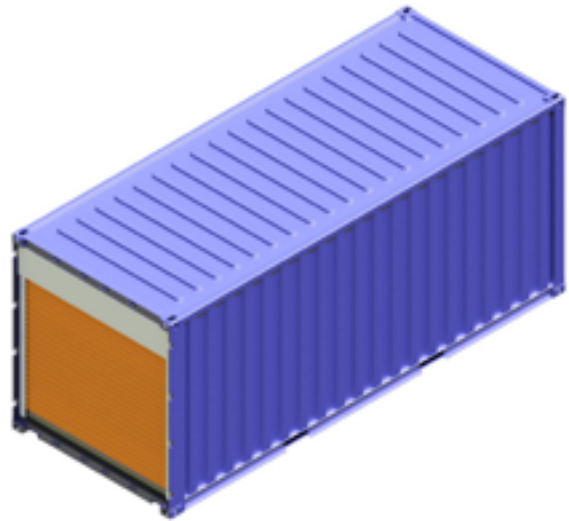
Manufactured from high-quality materials

### SECURE

Very robust and can be fitted with the Nokē™ Smart Entry System. This improves the security of individual self storage units while also making life easier for site managers by automating the lock check and overlocking processes

## FEATURES

- Material: colour Coated steel.
- Extensive product warranty: our doors are built with quality in mind, which is why we offer an extensive warranty.
- Full range of door colours available with polyester, plastisol or GreenCoat® finish.
- Easy-to-operate roller doors requiring little to no maintenance.
- Provided as complete container upgrading kit.

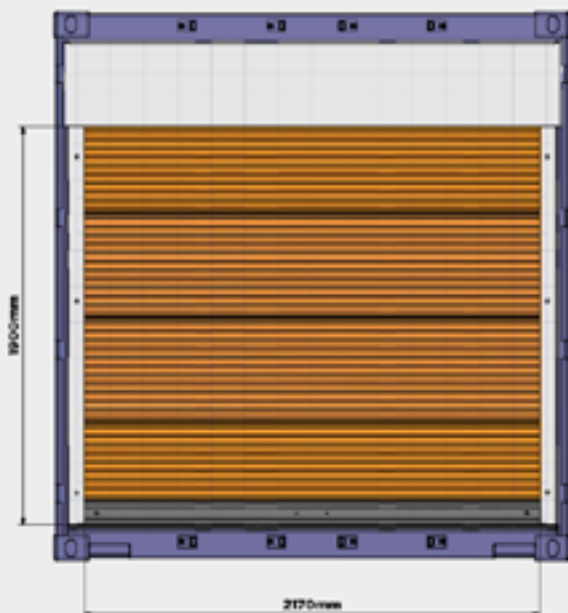


## COMPONENTS

A standard roller door fitting kit will be included for installation.



# SPECIFICATIONS



## MODEL 650R ROLLER DOOR

Recognised as the industry's best performing roller door, the 650R is ultra-reliable and proven across the globe. These high-quality steel doors last for years with limited maintenance.

### SPECIFICATIONS

|                  |   |
|------------------|---|
| <b>Height</b>    | 1900mm from the floor to the bottom of the header     |
| <b>Width</b>     | 2170mm  |
| <b>Thickness</b> | Polyester: 0.45mm; Platisol 0.50mm; GreenCoat® 0.50mm |
| <b>Finishing</b> | Polyester, Platisol and GreenCoat® Pural BT           |





## LOCK OPTIONS

Our roller doors can accommodate a variety of self storage locks and latches.

- Mini Latch
- Recessed Padlock
- Bezel Cylinder Latch (C487B)
- Nokē™ One

Upgrade your locks to the Nokē™ Smart Entry access control solution.

With traditional locks and latches, site managers have to manually check that each unit is locked. By utilising Nokē™, managers can digitally check for unlocked units and lock them remotely. In addition, they have access to unlock any available unit to show a potential tenant.





# JANUS

INTERNATIONAL EUROPE



+44 (0)20 8744 9444  
sales@januseurope.com  
januseurope.com

VERSION 1.5