



# EXTERNAL **UNITS**

Partner with  
Europe's leading  
full-service provider.



# MAXIMISE RENTABLE SPACE

Looking for extra storage or a way to generate income? Our relocatable storage units are the perfect solution for utilising unused land effectively. Designed to be installed in unconventional areas, these units help you optimise lettable space and boost rental income.

With our flexible and easy-to-install MASS and Vault units, you can turn outlying property into profitable, saleable space. If you're new to the self storage industry, these units also provide a cost-effective solution to test the waters.



Our units are crafted using sustainable manufacturing processes with durable and recyclable materials, ensuring both longevity and environmental responsibility.



Proudly developed and manufactured in the UK and Poland.



If you're looking to enhance the functionality, security, and adaptability of your current containers, the Janus container upgrade kit is ideal.

Need some advice on the ideal space planning and product mix for your external unit business? Our team of self storage experts would be happy to help and provide guidance.

# MASS UNIT

The MASS (Movable Additional Storage Structure) units offer versatile and scalable external storage solutions tailored to your business needs.

Choose from a range of configurations, including 1, 2, 3, or 4-door options, to meet both your business needs and customer requirements.

Built with premium-grade steel and engineered for durability, Janus MASS units have been developed to ensure exceptional quality and reliability.

## BENEFITS

<b>FLEXIBLE</b>	Available in a range of sizes, options and colours
<b>APPEARANCE</b>	Offers the same high quality look and feel as traditional self storage
<b>DURABLE</b>	Manufactured from high-quality materials
<b>SUSTAINABLE</b>	Manufactured according to EN 10169 + A1 and available in GreenCoat® painted steel
<b>GREAT VALUE</b>	Cost-effective for maximum revenue potential
<b>QUICK</b>	Easy to install and offered on a Supply Only or Supply and Install basis
<b>RETURN</b>	Premium rental rates with minimal investment providing excellent long term ROI (return on investment)

## SPECIFICATIONS

EXTERNAL		INTERNAL		DOOR OPENING	
<b>Front height</b>	2890mm	<b>Length</b>	5850mm	<b>Height</b>	2200mm
<b>Rear height</b>	2730mm	<b>Width</b>	2250mm	<b>Width</b>	1 Door (1600mm), 2 Door (2200mm), 3 Door (1400mm), 4 Door (1000mm)
<b>Length</b>	6020mm	<b>Headroom</b>	2615mm (lowest point), 2744mm (highest point)		
<b>Width</b>	2440mm			<b>WEIGHT</b>	
				1,000kg	



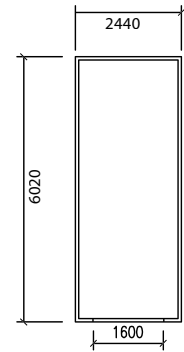
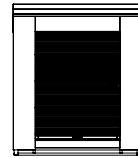
## FEATURES

- Galvanised steel roof with tapered design for water runoff.
- Weather-resistant polyester-coated walls.
- Floor structure made from high-grade galvanised steel with wood flooring.
- Fitted with stainless steel recessed locks as standard with the Nokē™ Smart Entry System available as an optional extra.
- Wide choice of door colours and finishes.
- Low-maintenance roller doors for effortless operation.



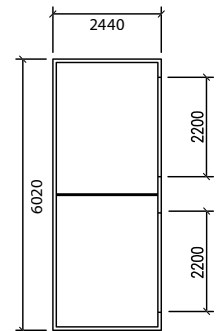
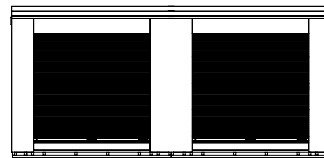
### 1-DOOR

Rentable Area  
- 13m<sup>2</sup> (per room)



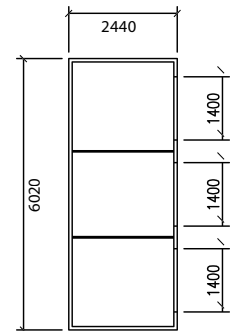
### 2-DOOR

Rentable Area  
- 6.5m<sup>2</sup> (per room)



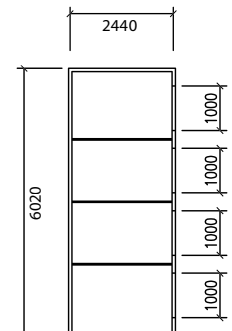
### 3-DOOR

Rentable Area  
- 4.35m<sup>2</sup> (per room)



### 4-DOOR

Rentable Area  
- 3.25m<sup>2</sup> (per room)





# VAULT UNIT

Janus Vault units are the perfect solution for creating additional storage in outdoor spaces. Their customisable, durable design allows you to optimise every inch of your lettable area, helping to maximise rental revenue.

These versatile units can be used individually or in multi-unit configurations and are suitable for installation in locations where traditional construction isn't feasible. In many cases, obtaining planning consent is simpler or not required at all.

Crafted from high-quality steel, Janus Vault units are delivered flat-packed for easy assembly. Up to 12 units can fit on a single truckload, and they're simple to install, relocate, and reposition using a forklift as needed.

## BENEFITS

<b>FLEXIBLE</b>	Customisable, scalable and relocatable
<b>SECURE</b>	Sturdy recessed lock as standard
<b>QUICK</b>	Flat packed and easy to install with step-by-step guide provided
<b>DURABLE</b>	High-quality material and design
<b>GREAT VALUE</b>	Cost-effective and maximises rental revenue.

## SPECIFICATIONS

EXTERNAL		INTERNAL		DOOR OPENING	
<b>Front height</b>	2600mm	<b>Floor space</b>	2900mm (l) x 2300mm (w)	<b>Height</b>	2000mm
<b>Rear height</b>	2555mm	<b>Headroom</b>	2380mm	<b>Width</b>	1500mm
<b>Length</b>	3000mm	<b>TOTAL RENTABLE AREA PER UNIT</b>		<b>FLAT PACKED DIMENSIONS</b>	
<b>Width</b>	2400mm	7.2m <sup>2</sup> (6.67 m <sup>2</sup> NLA)		760mm (h) x 3200mm (l) x 2400mm (w)	
<b>WEIGHT</b>					
1,000kg					

## FEATURES

### ROOF

- Galvanised steel with anti-condensation coating.
- Pitched design for water run off to the rear.

### WALLS

- Weather resistant polyester coated steel.
- Exterior wall available in a range of colours and interior wall painted as standard with a two-layer grey backside coating.

### DOORS AND LOCKS

- Roller door available in a wide range of colours.
- Handle and hardware installed in production.
- Stainless steel recessed lock, optional Nokē™ Smart Entry System.

### FLOOR / INTERIOR

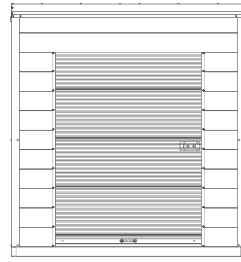
- Aluminium checker plate floor to minimise dirt (thickness: 2mm. Reinforced skeleton structure) and waterproof, non-slip technology.
- Floor load capacity of 5 kN/m<sup>2</sup>.
- Vented walls for continuous airflow and condensation control.

### BASE / FRAME

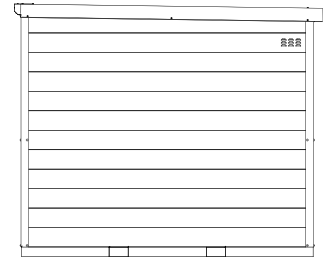
- High-quality galvanised steel with a smooth overall surface finish.
- Integrated forklift pockets for ease of relocating units.



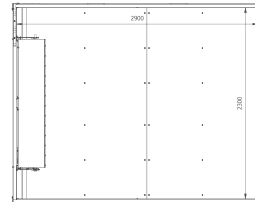
### FRONT VIEW



### SIDE ELEVATION



### FOOTPRINT



### STRUCTURE

- Highest grade, durable steel (SPA-H and SPA-C).
- Vents on walls to minimise condensation.
- All hardware is stainless steel, will not rust.
- Integrated forklift pockets.
- Up to 12 units can be loaded on one truck (equates to a net lettable area of 80m<sup>2</sup>).

### COLOURS

- Extensive Janus colour range for walls and doors.
- Chromate-free and sustainable GreenCoat® paint. Complies with current REACH regulation.
- Manufactured according to EN 10169 + A1.

### ACCESSORIES

Built in LED solar lighting pack with remote control included.

### ADDITIONAL OPTION

Nokē™ Smart Entry System.

### WARRANTY

2 years.



# CONTAINER UPGRADE KIT

The Janus container upgrade kit comes as a complete kit for easy installation.

This solution allows for the seamless installation of the Janus roller doors on any shipping container, offering a cost-effective means of upgrading your containers to meet customers' requirements.



## BENEFITS

### FLEXIBLE

Customisable, scalable and relocatable

### SUSTAINABLE

Manufactured according to EN 10169 + A1 and available in GreenCoat® painted steel

### DURABLE

Manufactured from high-quality materials

### SECURE

Very robust and can be fitted with the Nokē™ Smart Entry System. This improves the security of individual self storage units while also making life easier for site managers by automating the lock check and overlocking processes

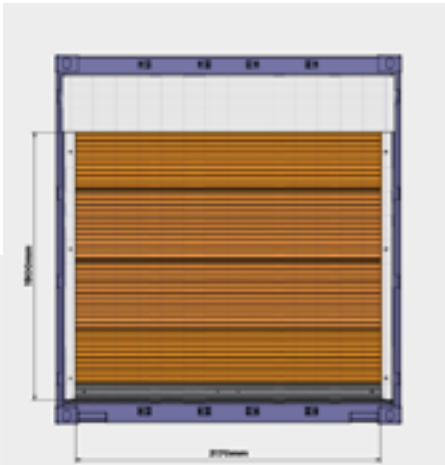


## FEATURES

---

- Material: colour Coated steel.
- Extensive product warranty: our doors are built with quality in mind, which is why we offer an extensive warranty.
- Full range of door colours available with polyester, plastisol or GreenCoat® finish.
- Easy-to-operate roller doors requiring little to no maintenance.
- Provided as complete container upgrading kit.





## MODEL 650R ROLLER DOOR

Recognised as the industry's best performing roller door, the 650R is ultra-reliable and proven across the globe. These high-quality steel doors last for years with limited maintenance.



**BEFORE**

## SPECIFICATIONS

---

<b>Height</b>	1900mm from the floor to the bottom of the header
<b>Width</b>	2170mm
<b>Thickness</b>	Polyester: 0.45mm; Plastisol: 0.50mm; GreenCoat® 0.50mm
<b>Finishing</b>	Polyester, Plastisol and GreenCoat® Pural BT





+44 (0)20 8744 9444  
sales@januseurope.com  
januseurope.com